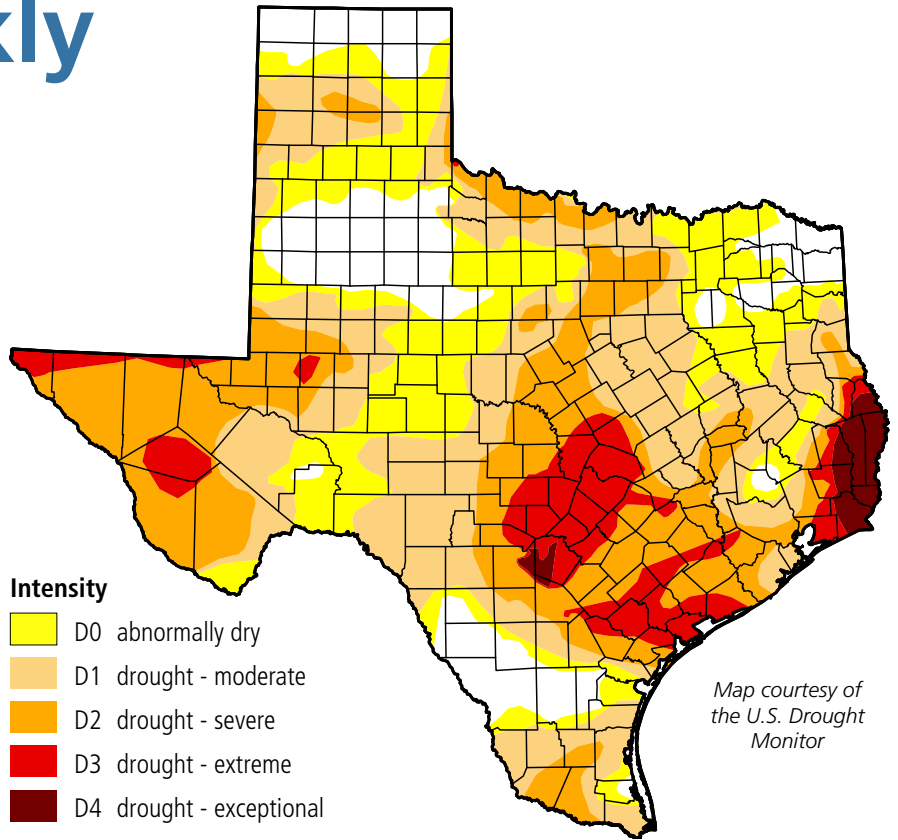


Water Weekly

For the week of 11/13/23

Water conditions

The drought map for conditions as of November 7 shows no change in the area of the state impacted by drought. Drought severity did ease a bit with the area impacted by severe or worse drought declining by two percentage points. Expect more improvements on next week's map.



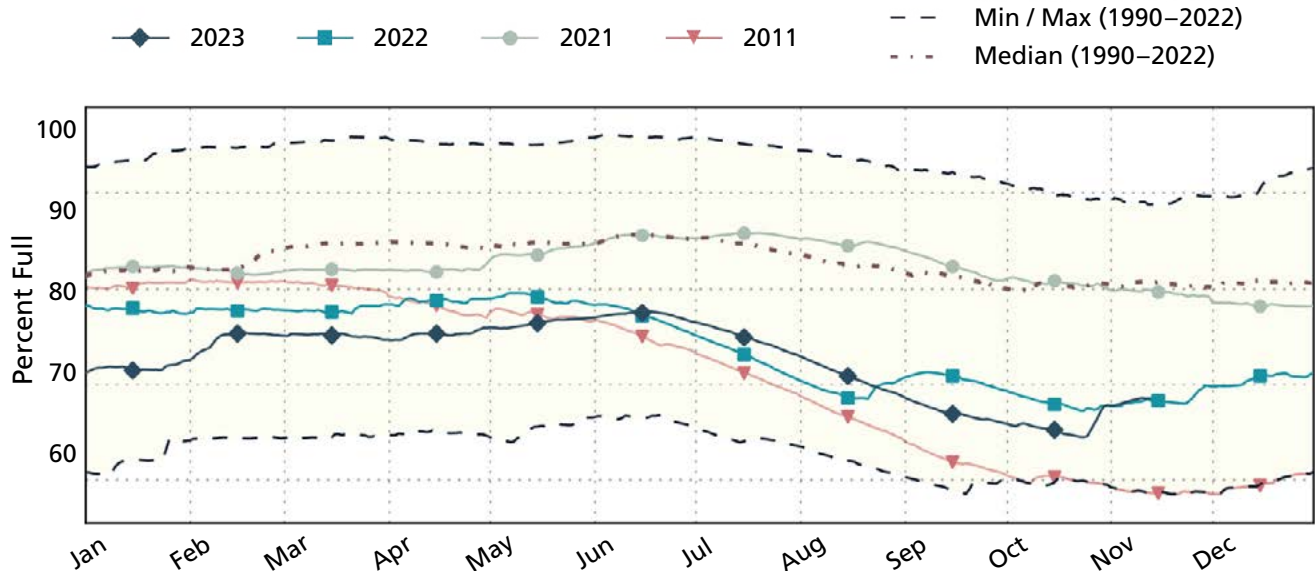
Drought conditions

- ◆ 65% now
- ◆ 65% a week ago
- ◆ 69% three months ago
- ◆ 65% a year ago

Statewide reservoir storage

TWDB chart

In mid-October, statewide water supply storage reached a low for the year of 64.5 percent of capacity. Since then, storage has increased by four percentage points. Mid-November storage is now slightly more than last year but still almost 12 percentage points less than normal for this time of year.



Written by Dr. Mark Wentzel — Dr. Mark Wentzel is a hydrologist in the TWDB's Office of Water Science and Conservation.

Bryan McMath, Government Relations | bryan.mcmath@twdb.texas.gov | 512-463-7850
 Media Relations | MediaRelations@twdb.texas.gov | 512-463-5129