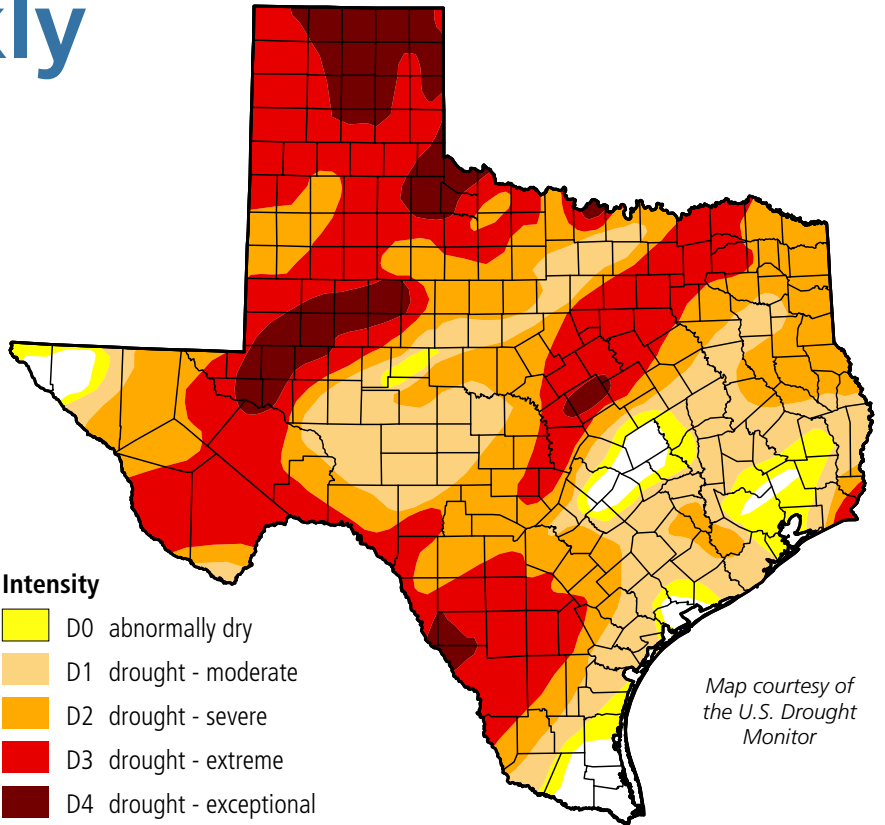


Water Weekly

For the week of 03/21/22

Water conditions

The latest drought map for conditions as of March 15 shows continued expansion and intensification of drought across our state. Severe or worse drought impacts 70 percent of the state, the largest extent since July 2013. Exceptional drought, the most severe category, impacts 9 percent of the state.



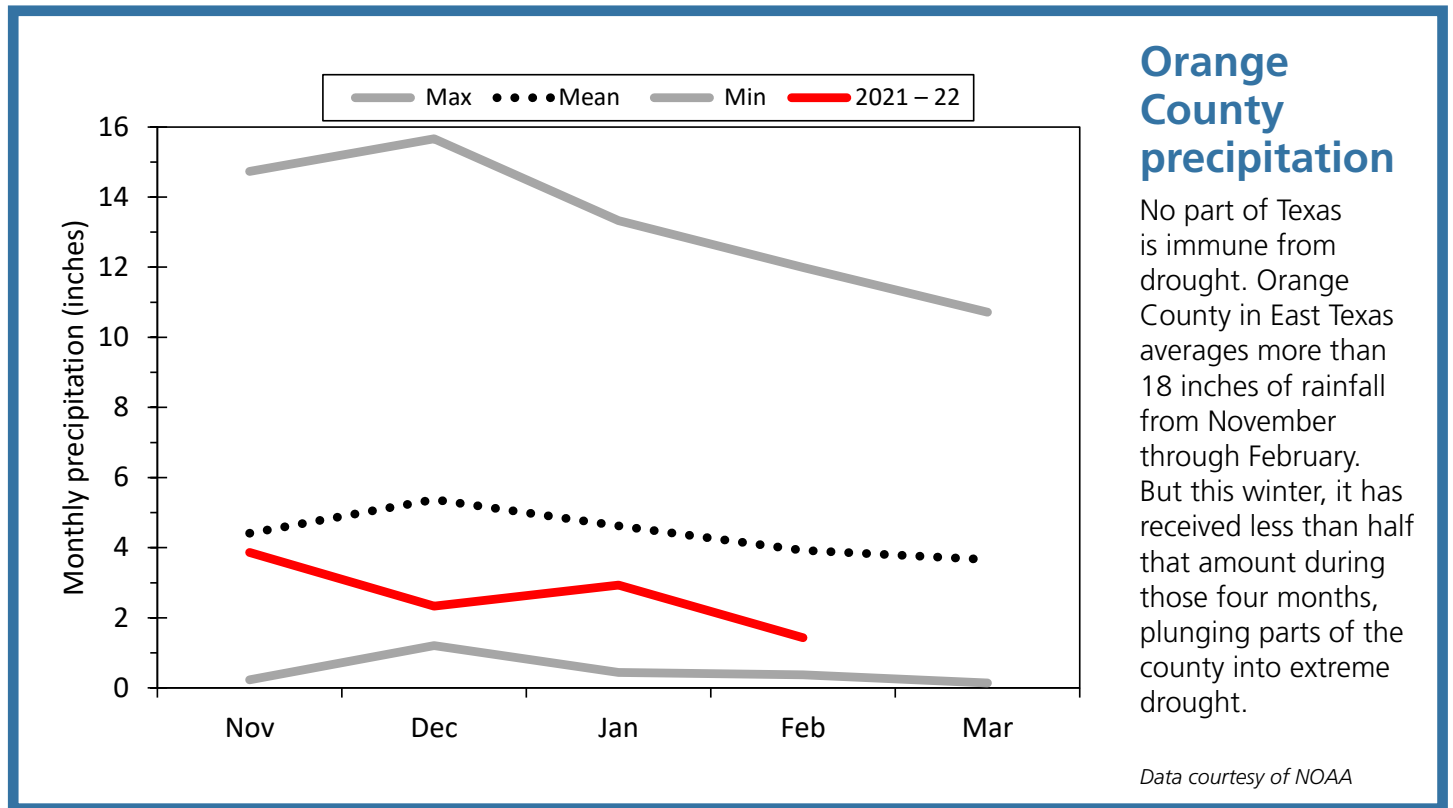
Map courtesy of the U.S. Drought Monitor

Drought conditions

- ◆ 91% now
- ◆ 90% a week ago
- ◆ 58% three months ago
- ◆ 68% a year ago

Intensity

- ◆ D0 abnormally dry
- ◆ D1 drought - moderate
- ◆ D2 drought - severe
- ◆ D3 drought - extreme
- ◆ D4 drought - exceptional



Orange County precipitation

No part of Texas is immune from drought. Orange County in East Texas averages more than 18 inches of rainfall from November through February. But this winter, it has received less than half that amount during those four months, plunging parts of the county into extreme drought.

Data courtesy of NOAA

Written by Dr. Mark Wentzel — Dr. Mark Wentzel is a hydrologist in the TWDB's Office of Water Science and Conservation.

Bryan McMath, Governmental Relations | bryan.mcmath@twdb.texas.gov | 512-463-7850
 Kaci Woodrome, Media Relations | kaci.woodrome@twdb.texas.gov | 512-475-1720