

Water Weekly

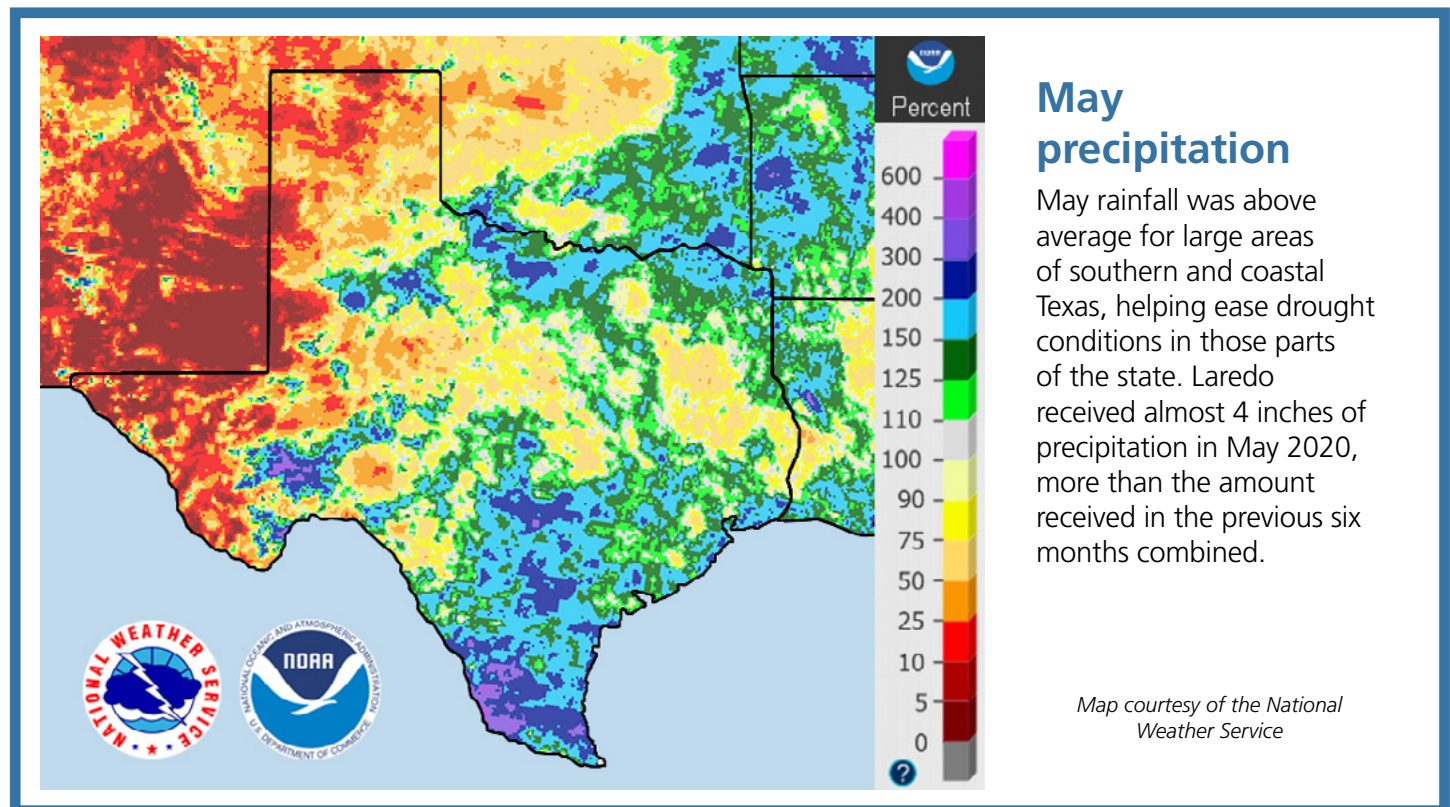
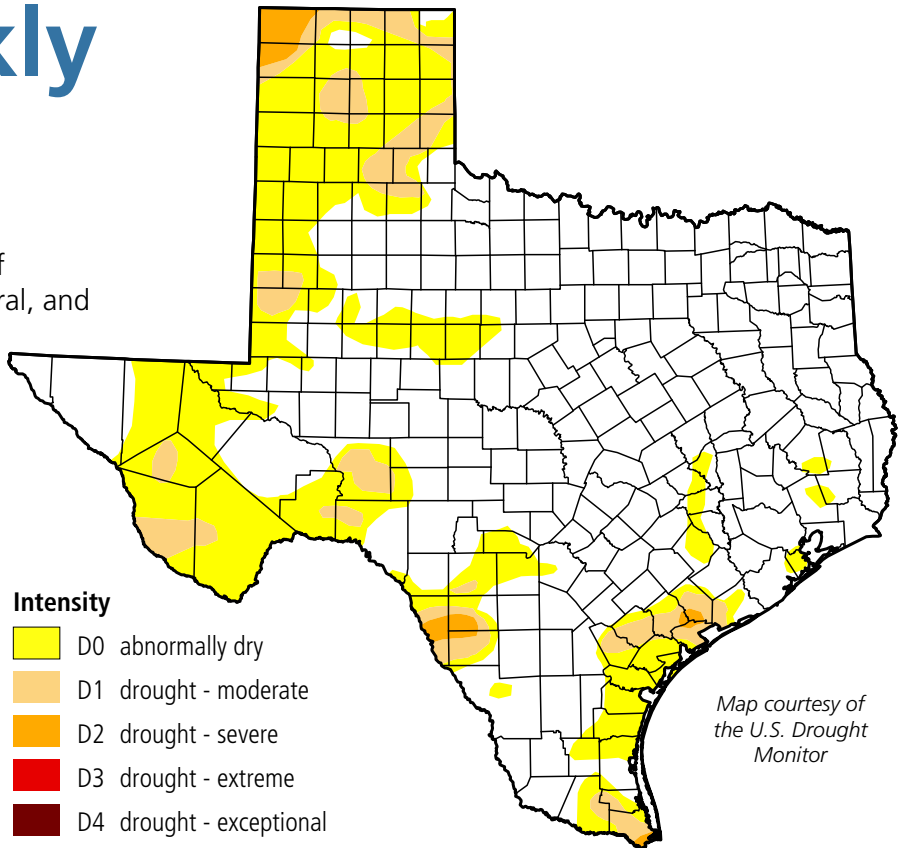
For the week of 06/01/20

Water conditions

The latest drought map for conditions as of May 26 shows improvements in East, Central, and South Texas and degradation in the Panhandle and West Texas. The total area impacted by drought dropped to 8 percent of the state, its lowest value since late July 2019.

Drought conditions

- ◆ 8% now
- ◆ 11% a week ago
- ◆ 20% three months ago
- ◆ 0.2% a year ago



Written by Dr. Mark Wentzel — Dr. Mark Wentzel is a hydrologist in the TWDB's Office of Water Science and Conservation.

Bryan McMath, Governmental Relations | bryan.mcmath@twdb.texas.gov | 512-463-7850
Sarah Haney, Media Relations | sarah.haney@twdb.texas.gov | 512-463-5129