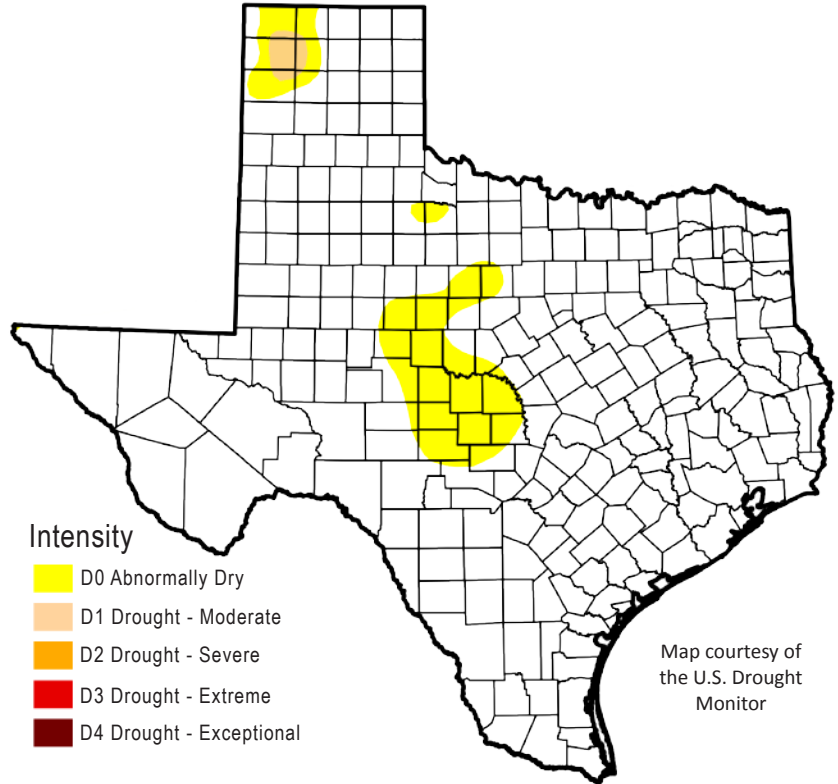


## DROUGHT CONDITIONS

This is the 16th week in a row of weekly improvements in statewide reservoir storage. Back on February 20, our reservoirs were collectively 64.9 percent full; they are now 83.7 percent full. More rain and runoff are needed in West and South Texas to bring reservoirs back up to normal conditions.

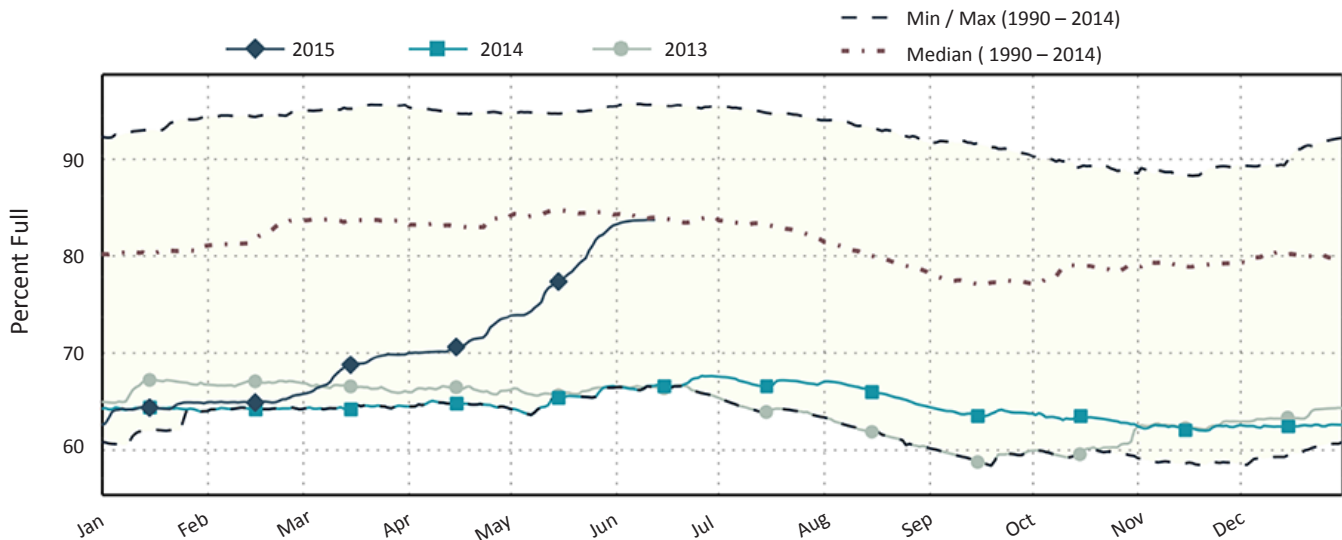
### Drought statistics

- 0.5% of state currently in moderate to exceptional drought
- 0.6% a week ago
- 41% three months ago
- 69% a year ago



## STATEWIDE RESERVOIR STORAGE

Comparison of statewide reservoir storage to minimums, maximums, and medians since 1990 and storage levels from 2013 and 2014.



Get more drought information on TWDB's website and social media accounts!

[www.twdb.texas.gov](http://www.twdb.texas.gov)



[www.facebook.com/twdbboard](https://www.facebook.com/twdbboard)



[@twdb](https://twitter.com/twdb)

Tulsi Oberbeck, Governmental Relations | [tulsi.oberbeck@twdb.texas.gov](mailto:tulsi.oberbeck@twdb.texas.gov) | 512.463.4864  
 Kimberly Leggett, Media Relations | [kimberly.leggett@twdb.texas.gov](mailto:kimberly.leggett@twdb.texas.gov) | 512.463.5129